



2020-2021

Viola
Audition
Packet

Orchestras

Young Artists Orchestra (YAO)

YAO, the most advanced of our ensembles, performs four to six concerts annually, including one side-by-side concert with the Colorado Symphony Orchestra. Concerts are performed in venues such as Boettcher Concert Hall and Gates Concert Hall at DU. Recent repertoire has included Dvorak *Symphony no. 9*, Brahms *Symphony no. 4*, Stravinsky's *Rite of Spring*, and Borodin *Symphony no. 2*.

Placement in YAO is determined by audition. Membership is open to musicians between the ages of 13-23 and is conducted by Wes Kenney. Composed of approximately 70 members, YAO rehearses Saturday mornings from 9:00am-12:30pm at the University of Denver's Lamont School of Music (2344 E Iliff Ave, Denver) and they attend an overnight weekend retreat in September.

Conservatory Orchestra (CO)

The Conservatory Orchestra is an advanced level ensemble for students who aspire to grow into YAO. The Conservatory Orchestra performs 3-4 concerts annually in conjunction with the String Ensemble. Concerts are performed in venues such as Central Presbyterian Church and Boettcher Concert Hall. Students receive occasional coachings throughout the season and attend an overnight retreat in September. Recent repertoire includes Brahms *Hungarian Dances*, Beethoven *Symphony no. 1*, and Beethoven *Symphony no. 5*.

Placement in the Conservatory Orchestra is by audition. Membership is open to musicians between the ages of 10 and 18. Conservatory Orchestra rehearses Monday evenings from 6:30pm-8:30pm at Bethany Lutheran Church (4500 E Hampden Ave, Cherry Hills Village).

String Ensemble (SE)

The String Ensemble gives young music students an opportunity to experience the great wealth of string orchestra literature. The ensemble is designed for those who are developing a facility in bowing techniques, reading music, and the use of vibrato. Composed of approximately 25 members, the String Ensemble performs 3-4 concerts in conjunction with the Conservatory Orchestra. Recent repertoire includes Grieg's *Holberg Suite*.

Placement in the String Ensemble is determined by audition and membership is open to musicians between the ages of 8 and 13. String Ensemble rehearses Monday evenings from 5:00pm-6:30pm at Bethany Lutheran Church (4500 E Hampden Ave, Cherry Hills Village).

Audition Requirements

Candidates auditioning for membership in a Denver Young Artists Orchestra Association ensemble must prepare the following:

1. A solo piece or etude (excerpt) no longer than 1 minute that best demonstrates your highest level of musicianship and technique.
2. Orchestral excerpt(s) as defined below.

a. CANDIDATES APPLYING FOR THE STRING ENSEMBLE

Prepare the enclosed excerpts from:

- **Beethoven: *Symphony no. 6*, mvt. 3**

b. CANDIDATES APPLYING FOR THE CONSERVATORY ORCHESTRA

Prepare the enclosed excerpts from:

- **Beethoven: *Symphony no. 6*, mvt. 3**
- **Berlioz: *Roman Carnival Overture***

c. CANDIDATES APPLYING FOR THE YOUNG ARTISTS ORCHESTRA

Prepare the enclosed excerpts from:

- **Bartok: *Concerto for Orchestra***
- **Beethoven: *Symphony no. 5***

***Note: if you are auditioning for more than one orchestra, please prepare the required excerpts for the higher level orchestra**

3. Please prepare a scale from the enclosed materials appropriate to the orchestra for which you are auditioning.
4. Possible sight-reading as determined by the audition committee.

The excerpts are meant to challenge your musicianship. Written below are a few suggestions to assist your audition preparation.

1. **Play the music in the right tempo:** If tempos are not indicated in your excerpts, please work with your teacher and listen to reputable orchestra recordings to determine the correct speed. Time after time our judges comment that candidates' tempi are unsteady and often *way too fast!* Judges are not listening to hear how fast you can play; rather, they are listening to see if you can play the piece correctly at an appropriate tempo. Rushing and dragging are things to avoid. Practice with a metronome and record yourself playing these excerpts to ensure accuracy.

2. **Play with dynamic contrast:** Often judges comment that candidates ignore dynamic markings, especially the softer end of the dynamic spectrum. Remember that music is more than rhythms and pitches: first and foremost music is sound. Sell your performance!

3. **Divisi and rests:** All players should learn **top** divisi/notes unless explicitly noted otherwise. Also, unless otherwise marked, long rests (more than two measures) should be played as unmeasured pauses in the audition.

SE and CO:

Beethoven: *Symphony no. 6, mvt. 3*

III. Lustiges Zusammensein der Landleute
Allegro 2/4 108

Viola Beethoven Symphony #6

13

26

40

54

70

122

pp

dolce

pp

dolce

pp

dolce

cresc.

ff

p

cresc. p

36

CO:

Berlioz: *Roman Carnival Overture*

Andante sostenuto (♩=52)

pizz.

p

arco

div.

p *mf* *p*

mf espress.

cresc. molto *f* *dim.* *p* *mf*

YAO:

Bartok: *Concerto for Orchestra*

38

Calmo

43

f cantabile

51

59

66

Tempo I

p *mf*

Beethoven: *Symphony no. 5*

[illegible]

Scales

Viola - String Ensemble

CHOOSE 1

♩ = 120

D Major



C Major



Scales

Viola - Conservatory Orchestra

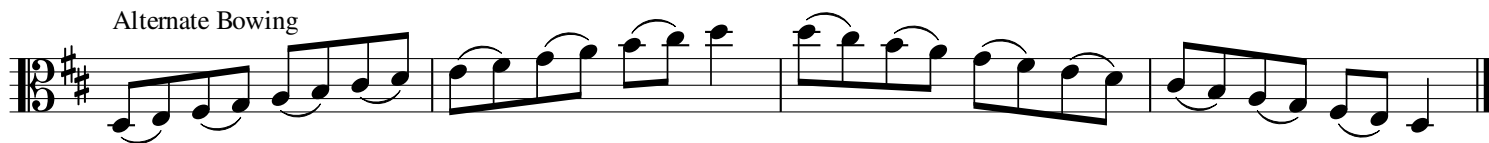
CHOOSE 1

♩ = 120

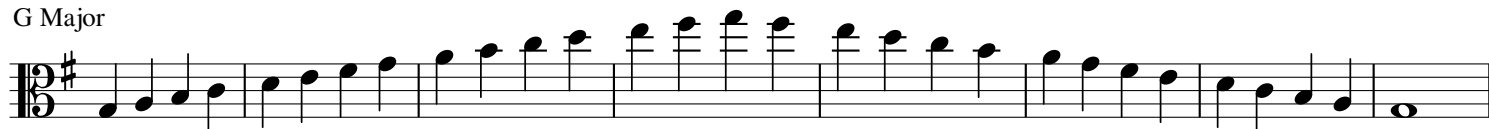
D Major



Alternate Bowing

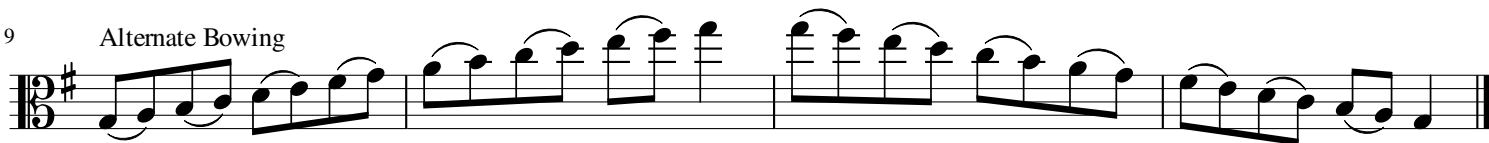


G Major



9

Alternate Bowing



C Major



Alternate Bowing



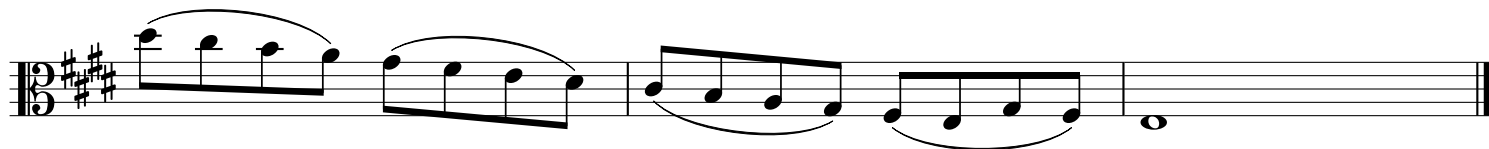
YAO Viola Audition Scales

Choose 1 of the 2 major scales

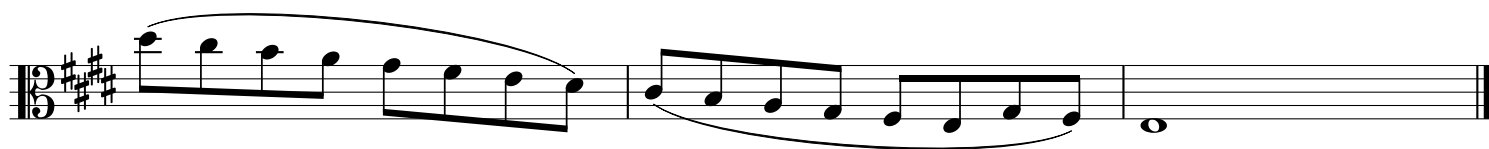
in addition to the D Melodic Minor scale

$\text{♩} = 100$

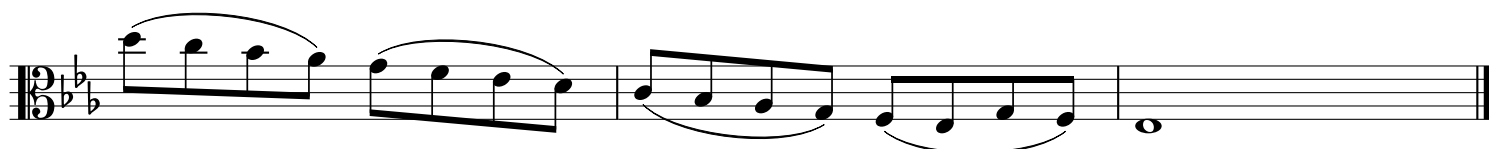
E Major



Alternate Bowing



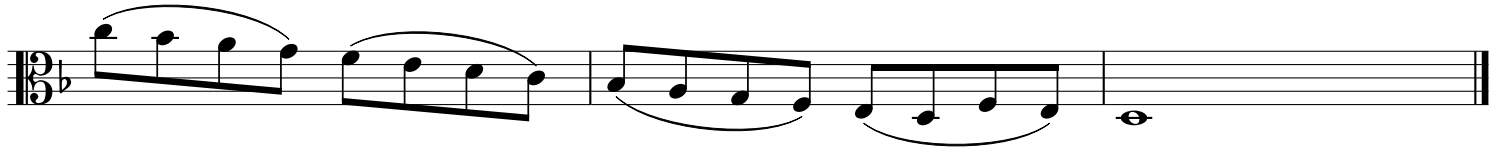
E \flat Major



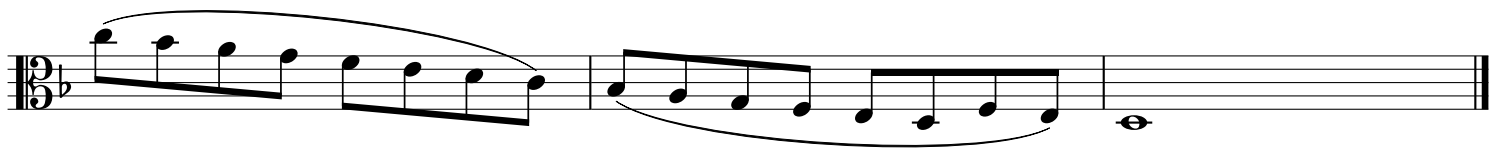
Alternate Bowing



D Melodic Minor



Alternate Bowing



Good luck on your audition!